

# Red One International Karting Track

## Case Study

Previous System:  
2000 Watt Metal Halide Light Fixtures

Mledtech System:  
400 Watt LED MSO RTFL High-Mast Light Fixtures



### Customer Profile

Red1 International Karting Circuit-Beijing was founded in 2014. It fully combines entertainment, competition, catering and leisure in one. Red1Karting is the perfect place for racing leagues, team building, and private parties.

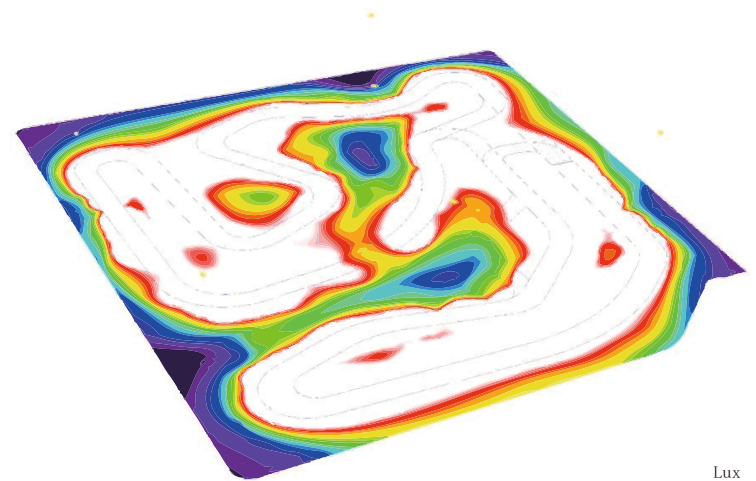
### Scope of Work

Mledtech was contacted to create a lighting design for Red1 Karting in Beijing. This project consisted of a one for one replacement of the existing 2000 Watt Metal Halide Fixtures and re-purposing the existing poles.

In all sports, LED lighting provides the best stage for competitors to perform, and it's no different for Go-Kart drivers. Glare control technology equals more uniform lighting with fewer unwanted shadows or hot spots that can distract drivers. In a sport with little margin for error, LED technology helps ensure the lights don't create another variable for drivers. Quality LED lighting increases driver safety and enhances the experience for drivers and fans.

### The Solution

An engineered photometric design was performed. We checked glare and light output. Then we provided exact aiming points for each fixture. Mledtech Vision Smart 400 Watt LED MSO RTFL High Mast light fixtures were easily mounted on the existing poles. Our LED lighting solutions deliver uniform light in the air and on the court much more efficiently than metal halide light and significantly reduce unwanted light spill and light pollution.



Eave 【Lx】	Emin 【Lx】	Emax 【Lx】	Emin/Eave 【Lx】	Emin/Emax 【Lx】
181	115	257	0.63	0.43



mledtech

LED Sports Lighting

**Enhance Athletes' Performance**

## The Results

After the installation the facility manager said "Let there be light!"

Where every turn counts, uniform, no-glare light does not effect the vision of the drivers while going at a fast speed. Mledtech lunimaires produce a minimum of glare and spillover, and require no maintenance during outdoor winter and summer temperature extremes, through the extent of the manufacture warranty.

The new lighting system achieved an average of uniformity of 60 percent and a saved in energy costs by 67 percent. LEDs offer a low-cost entry point to provide high-quality light and make the venue more dynamic. Also, the long life of the LED carries a great saving in replacement parts and an almost total unconcern of the maintenance personnel.

Mledtech Vision Smart MSO RTFL Series High Mast Light fixtures improved the Red1 Go-Karting experience with the greatest visual comfort for the Go-Kart drivers. The advantage is clear. Mledtech products produce the highest quality lighting in the industry backed by a seven year warranty.



Mledtech approaches each project as a unique opportunity to exceed the customers', the players' and the observers' expectations in terms of improved lighting delivered, improved visual comfort and operational savings. Our process steps help streamline this effort. We will meet directly with financial decision makers to go over final proposal in detail. Mledtech will work with the customer's contractor to provide them with detailed computer aiming points which can be set while on the ground.



mledtech

LED Sports Lighting



Paddle Tennis  
Courts



Recreational  
Facilities



Ice Rinks



Football  
Stadiums



Trap and  
Skeet

[www.mledtech.com](http://www.mledtech.com)